



# FOR SALE

Collins Blvd.  
Orrville, Ohio 44667

**BUILD FOR GROWTH. POSITION FOR SUCCESS.**

## HIGHLIGHTS

- 22 acres with 60% buildable
- 5.51 acres zoned industrial
- 16.68 acres zoned agricultural
- Flat typography
- Excellent land condition

**ASKING SALE PRICE:  
\$540,000.00**

## DEMOGRAPHICS

Population	2018	2023 Projection
3 Miles	11,516	11,649
5 Miles	17,516	17,712
Income	Median	Average
3 Miles	\$52,206	\$65,972
5 Miles	\$55,191	\$69,177
Traffic Count		
Main & Hostetler Road		10,626 VPD

# FOR SALE

## Collins Boulevard Orrville, Ohio 44667

## MAP AND LOCATION AERIAL



**ELIOT KIJEWski, SIOR**  
Senior Vice President  
216.525.1487  
ekijewski@crescorealestate.com



3 Summit Park Drive, Suite 200, Cleveland, Ohio 44131 • 216.520.1200 p  
216.520.1828 f • crescorealestate.com

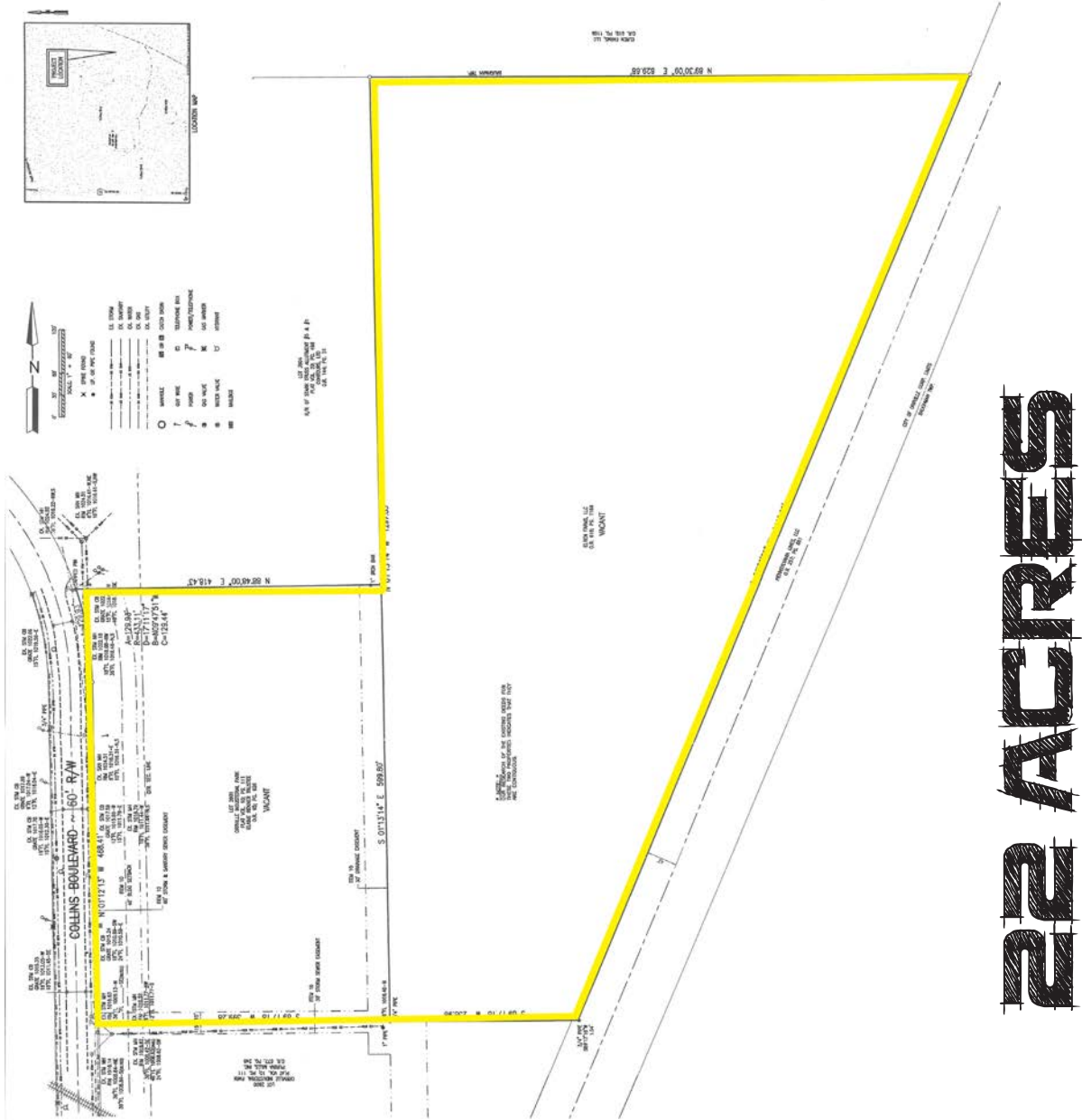
*Independently Owned and Operated / A Member of the Cushman & Wakefield Alliance*

Cushman & Wakefield Copyright 2018. No warranty or representation, express or implied, is made to the accuracy or completeness of the information contained herein, and same is submitted subject to errors, omissions, change of price, rental or other conditions, withdrawal without notice, and to any special listing conditions imposed by the property owner(s). As applicable, we make no representation as to the condition of the property (or properties) in question.

# FOR SALE

## Collins Boulevard Orrville, Ohio 44667

# PARCEL



**ELIOT KJEWSKI, SIOR**  
Senior Vice President  
216.525.1487  
ekijewski@crescorealestate.com



3 Summit Park Drive, Suite 200, Cleveland, Ohio 44131 • 216.520.1200 p  
216.520.1828 f • crescorealestate.com

Independently Owned and Operated / A Member of the Cushman & Wakefield Alliance

Cushman & Wakefield Copyright 2018. No warranty or representation, express or implied, is made to the accuracy or completeness of the information contained herein, and same is submitted subject to errors, omissions, change of price, rental or other conditions, withdrawal without notice, and to any special listing conditions imposed by the property owner(s). As applicable, we make no representation as to the condition of the property (or properties) in question.